

PHANTOM

ULTRA-LOW PROFILE, HIGH-PERFORMANCE FASTENING FOR PRECISION JIG APPLICATIONS

Kwikbolt™
The Single Sided Temporary Fastener



OVERVIEW

Kwikbolt temporary fasteners are advanced, precision-engineered solutions trusted across aerospace assembly lines worldwide.

The Phantom is a bespoke, low head, profile jig temporary fastener to engage into a drill jig, drill bar, drill plate. It provides clamping through the jig to the structure for precise alignment and clamping, all packaged within the drill jig.

This design is based on the Kwikbolt | Thunder design with a ultra-low profile head interface. The patented product provides precise alignment within the jig and the structure. It has an ultra-low head protrusion for maximum accessibility to the jig for drilling and inspection. Customers can define the jig interface (diameter, length etc) as well as structure hole diameter and grip range, allowing for a high-performance jig fastener.

SOLUTION

- **Assembly within aerospace jigs and fixtures** requiring tight tolerances
- **Precision hole creation and alignment** in structural assemblies
- Installation within situations requiring **low-profile temporary fastening**
- **Custom-engineered fastening solutions** for unique jig environments

PRODUCT FEATURES

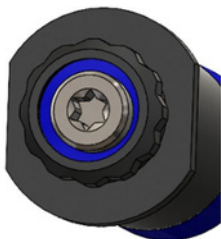
- **Grip range** 3.18mm (4/32 inch) to 9.53mm (12/32 inch)
- **Clamp load** 220N (50lbf) to 8,000N (1,300lbf)
- **Ultra-low profile** design for minimal interference in jig applications
- **Single-sided installation** for fast, efficient use
- **Provides doweled alignment** and secure clamping
- **Supports high load and high shear performance**
- Available in **bespoke hole diameters and grip ranges**
- **Customisable** to fit any jig or fixture design



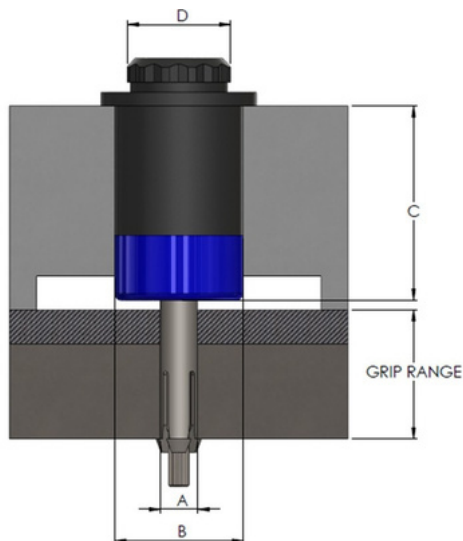
Colour Coding top and bottom



Flats on flange to customers specification



P1



SJ-0632A-XXXX-XXX-XXX-P1-MM

Kwikbolt Part Numbering



MM-Colour coding to customer specifications.

Other loads, tolerances and diameters available to customer requirements

Part Code	A nominal	B*	C min*	D min*	Grip Range*	Clamping Force Range N (lbf)	No of Cycles
	mm (inch)						
0432-P1	3.26 (0.128)	Standard Jig diameter 25.4mm (1.00") However larger to 51mm(2.00") and smaller 12.5mm (0.590") diameter available depending on customer project.	Standard Jig body length 19mm (0.750") However larger 45mm(1.772") and smaller 12.5mm (0.500") depth available depending on customer project.	15.5 (0.610)	1mm (0.039) to 75mm (2.953)	222 (50) - 890 (200)	500
0532-P1	3.96 (0.156)			15.5 (0.610)	1mm (0.039) to 75mm (2.953)	222 (50) - 1335 (300)	500
0632-P1	4.76 (0.188)			15.5 (0.610)	1mm (0.039) to 150mm (3.937)	222 (50) - 3,558 (800)	500
0832-P1	6.35 (0.250)			15.5 (0.610)	1mm (0.039) to 150mm (3.937)	222 (50) - 3,558 (800)	500
1032-P1	7.94 (0.313)			15.5 (0.610)	1mm (0.039) to 150mm (5.905)	222 (50) - 5,338 (1,200)	500
1232-P1	9.53 (0.375)			20.5 (0.808)	1mm (0.039) to 150mm (5.905)	222 (50) - 5,338 (1,200)	500
1432-P1	11.15 (0.438)			20.5 (0.808)	1mm (0.039) to 150mm (5.905)	222 (50) - 5,338 (1,200)	500
1632-P1	12.70 (0.500)			20.5 (0.808)	1mm (0.039) to 150mm (5.905)	445 (100) - 6,672 (1,500)	500
1832-P1	14.24 (0.563)			24.5 (0.965)	1mm (0.039) to 150mm (5.905)	445 (100) - 6,672 (1,500)	500
2032-P1	15.90 (0.625)			24.5 (0.965)	1mm (0.039) to 150mm (5.905)	445 (100) - 6,672 (1,500)	500
2432-P1	19.05 (0.750)			35.5 (1.398)	1mm (0.039) to 150mm (5.905)	445 (100) - 8,006 (1,800)	500
3232-P1	25.40 (1.000)			35.5 (1.398)	1mm (0.039) to 150mm (5.905)	445 (100) - 8,006 (1,800)	500

Grip Length Increments | 15mm (0.591")

* Varies depending on customer project.